

KHSAA Basketball - Game Box Score

Sacred Heart Academy Valkyries vs. Barren County Trojonettes

Date: 03/26/2004 Time: 8:30 pm Site: Diddle Arena-Bowling Green, KY Attendance: 4530

Visitors: Barren County Trojonettes

##	Name	P	FG	3 Pt	FT	PTS	ORB	DRB	TR	PF	AST	TO	BS	ST	MIN
4	* Piper Lindsey		1/3	1/6	1/2	6	0	0	0	0	1	5	0	1	23:58
5	TJ Thomas		1/2	1/5	0/0	5	2	1	3	0	2	1	0	1	19:27
11	Haley Wilkinson		0/0	0/4	0/0	0	0	0	0	1	0	0	0	0	8:41
20	Haley Lindsey		1/1	0/1	0/0	2	0	1	1	1	0	1	0	0	4:43
23	* Patrika Barlow		4/13	1/3	0/0	11	2	2	4	1	1	3	0	1	22:27
24	* Jessica Mitchell		1/2	0/0	0/0	2	1	1	2	1	0	0	0	0	10:20
25	* Haley Edmunds		2/3	0/0	0/0	4	0	0	0	1	0	2	1	1	14:37
33	* Lindsey Williams		1/2	0/2	1/2	3	0	1	1	3	0	1	0	0	15:50
35	Jessica Shelton		0/2	0/0	1/2	1	0	0	0	0	0	0	0	0	9:57
41	Bethany Spillman		2/3	0/0	0/0	4	3	2	5	1	2	3	0	1	15:04
45	Sarah Bauer		0/1	0/1	0/0	0	0	0	0	0	0	1	0	0	5:22
21	Julie Wilson		0/0	0/0	0/0	0	0	0	0	1	0	0	0	0	4:19
22	Jessica Jolley		0/1	0/1	0/0	0	1	0	1	1	0	0	0	0	3:10
31	Casey Glover		0/0	0/0	0/0	0	0	0	0	0	0	0	0	0	2:05
	Team						4	0	4						
	Totals		13/33	3/23	3/6	38	13	8	21	11	6	17	1	5	160
	2 PT FG		1st Half	7/18	38.9%	2nd Half	6/15	40.0%	Game	13/33	39.4%				
	3 PT FG		1st Half	1/10	10.0%	2nd Half	2/13	15.4%	Game	3/23	13.0%				
	Free Throws		1st Half	2/4	50.0%	2nd Half	1/2	50.0%	Game	3/6	50.0%				

Home: Sacred Heart Academy Valkyries

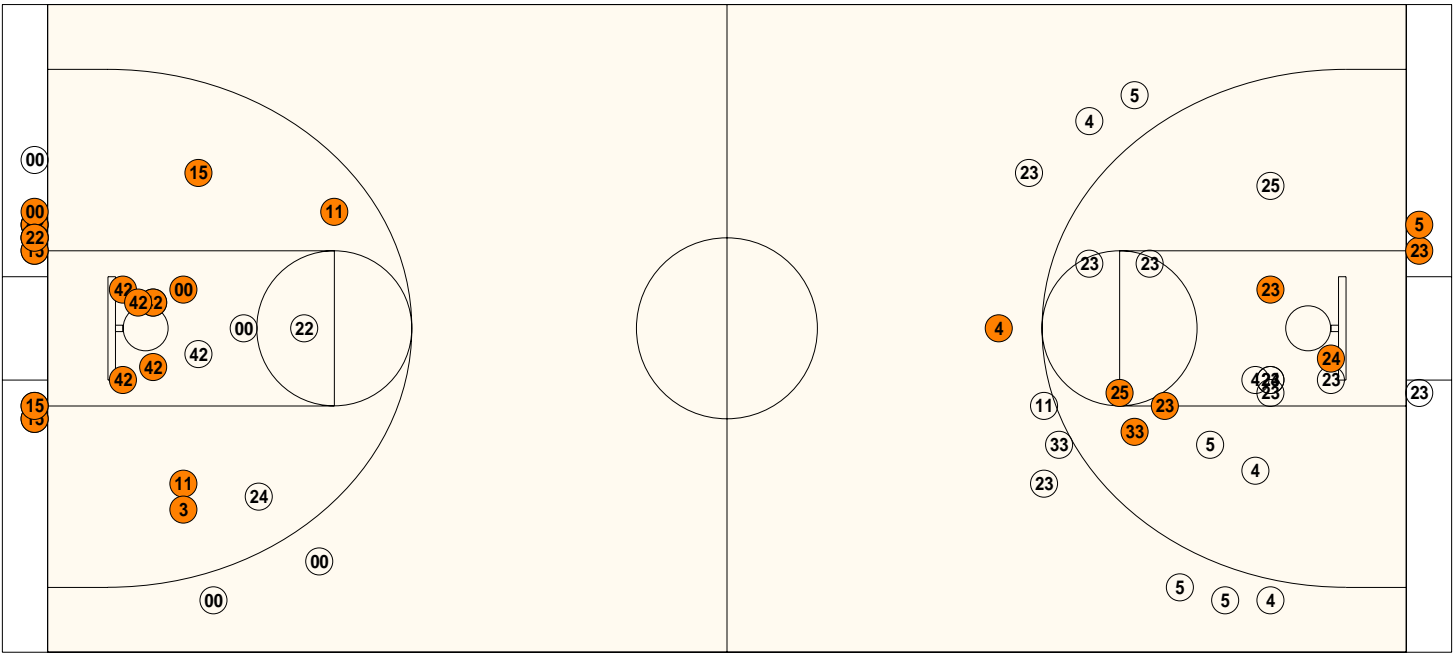
##	Name	P	FG	3 Pt	FT	PTS	ORB	DRB	TR	PF	AST	TO	BS	ST	MIN
00	* Carly Ormerod		4/9	0/2	2/2	10	1	5	6	1	5	0	0	2	19:21
3	Alison Denbow		1/1	0/0	0/0	2	1	0	1	0	0	2	0	0	11:13
10	Mary Daly Muller		1/2	0/0	0/0	2	2	2	4	1	2	0	0	1	6:03
11	* Jackie Distler		4/4	0/0	0/0	8	2	1	3	1	4	0	0	0	16:45
15	* Taylor Kopple		7/10	0/0	0/0	14	1	1	2	1	4	1	0	0	19:56
20	Connie Ferch		0/0	0/0	0/0	0	0	0	0	0	0	0	0	0	DNP
22	* Jordan Hess		3/6	0/0	0/0	6	2	0	2	1	3	3	0	4	20:34
23	Sarah Miles		1/2	0/0	0/2	2	0	0	0	1	0	0	1	0	6:49
24	Kelsey McCarty		6/7	0/0	0/1	12	2	6	8	1	4	3	1	2	14:12
30	Elizabeth Campbell		3/3	0/0	0/0	6	0	1	1	1	0	2	1	0	12:45
33	Meredith Wade		1/2	0/0	0/0	2	0	1	1	0	1	1	0	1	7:59
42	* Crystal Kelly		8/10	0/1	1/2	17	1	6	7	1	4	2	2	1	16:00
43	Kristen Barrow		1/1	1/1	0/0	5	0	1	1	1	0	1	0	0	8:23
	Team						3	2	5			1			
	Totals		40/57	1/4	3/7	86	15	26	41	10	27	16	5	11	160
	2 PT FG		1st Half	22/28	78.6%	2nd Half	18/29	62.1%	Game	40/57	70.2%				
	3 PT FG		1st Half	0/2	0.00%	2nd Half	1/2	50.0%	Game	1/4	25.0%				
	Free Throws		1st Half	3/4	75.0%	2nd Half	0/3	0.00%	Game	3/7	42.9%				

	Bar	SACR		Bar	SACR		Bar	SACR
Free Throw Pts	3	3	3Pt Points	9	3	Pts/Possession	0.61	1.34
Pts off Turnovers	2	22	2nd Chance Points	9	20	Pts off Bench	12	31
Total Rebounds	21	41	Team Rebounds	4	5	Dead Ball Reb	3	2
Off Rebound %	33.3	65.2	Def Rebound %	34.8	66.7	Total Rebound %	33.9	66.1
3Pt Efficiency	-13.2	-21.8	Def. Stops	24	43	Pts/Shot	0.64	1.34
Technical Fouls	Bar	None						
	SACR	None						
Officials	Tommy Hall, Steve Kellam, Shannon Feck							

	Qtr 1	Qtr 2	Qtr 3	Qtr 4	OT 1	OT 2	OT 3	OT 4	Total
Barren County Trojonettes	12	7	16	3	0	0	0	0	38
Sacred Heart Academy Valkyries	27	20	20	19	0	0	0	0	86

Largest Lead SACR 86 Bar 38 (48 pts) **Lead Changes** 0 **Number of Ties** 1
Comments: None

FIRST HALF



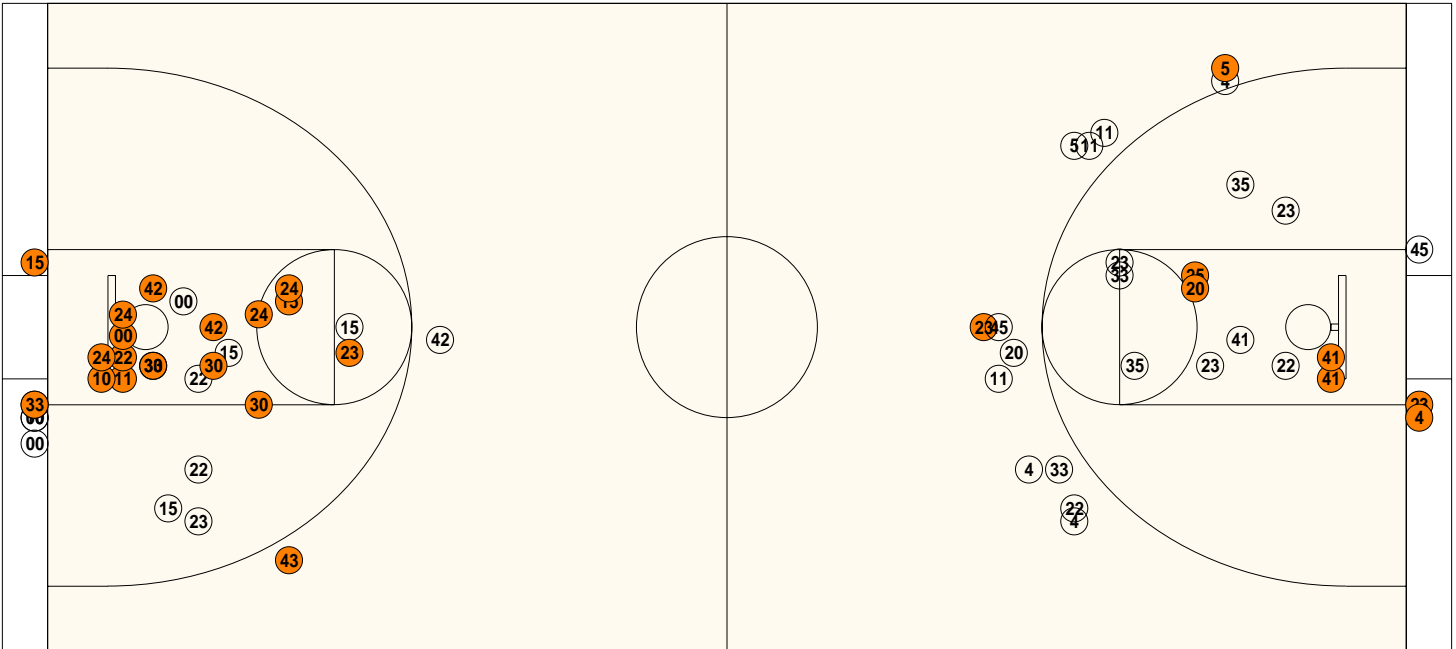
Sacred Heart Academy

Shooting		Pts	Pts	
2FG	22/28 (78.6%)	44	Pts/Shot	1.47
3FG	0/2 (0.00%)	0	2nd Eff Pts	4
TFG	22/30 (73.3%)		Pts off TO's	14
FT	3/4 (75.0%)	3	3Pt Eff	-52.4
Scoring Distribution: 2FG 93.6% 3FG 0.0% FT 6.4%				

Barren County

Shooting		Pts	Pts	
2FG	7/18 (38.9%)	14	Pts/Shot	0.63
3FG	1/10 (10.0%)	3	2nd Eff Pts	5
TFG	8/28 (28.6%)		Pts off TO's	0
FT	2/4 (50.0%)	2	3Pt Eff	-15.9
Scoring Distribution: 2FG 73.7% 3FG 15.8% FT 10.5%				

SECOND HALF



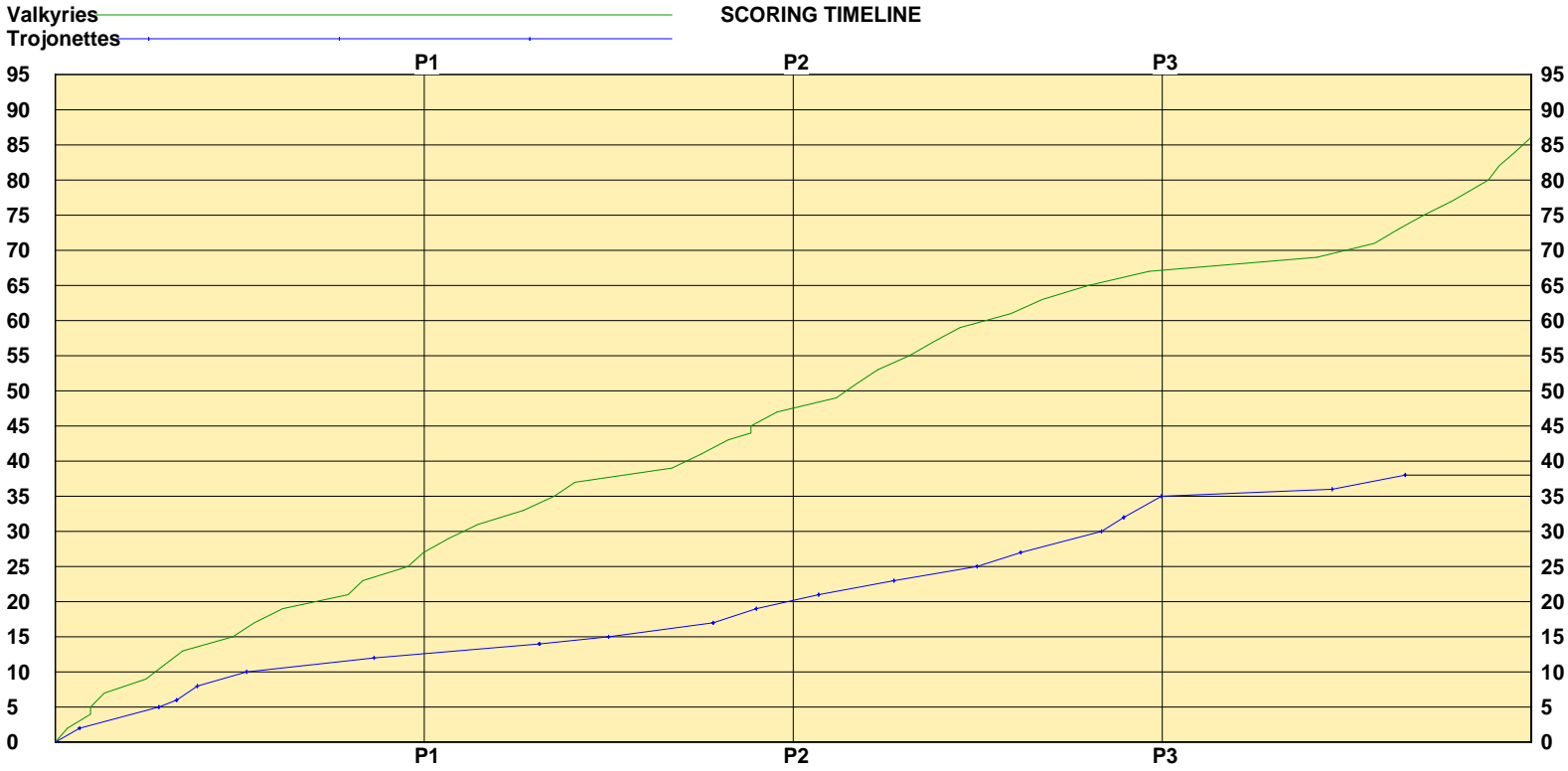
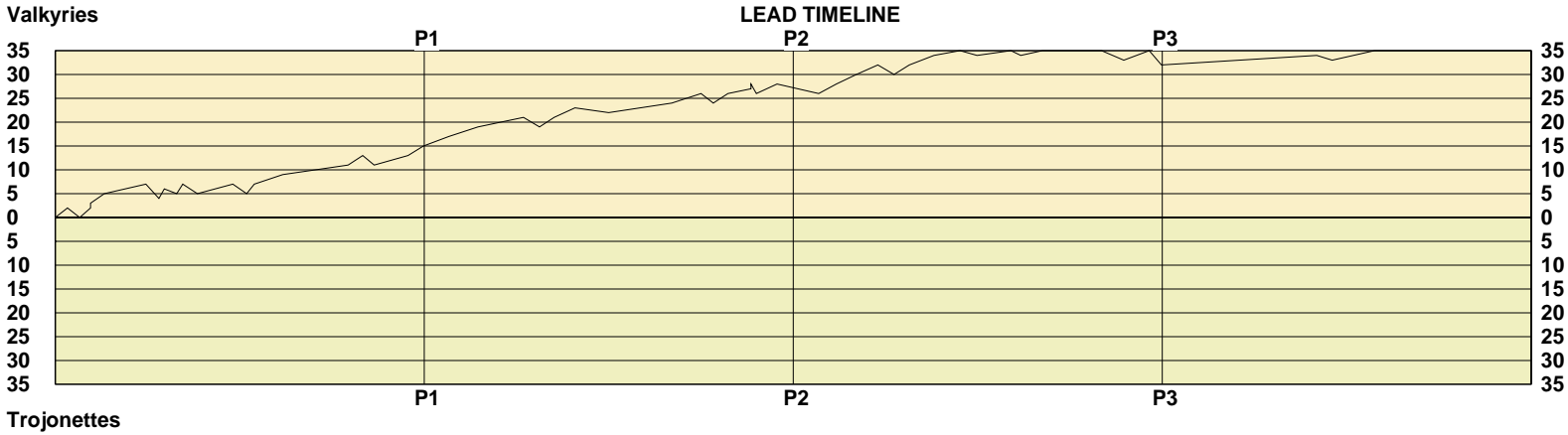
Sacred Heart Academy

Shooting		Pts	Pts	
2FG	18/29 (62.1%)	36s	Pts/Shot	1.22
3FG	1/2 (50.0%)	3	2nd Eff Pts	16
TFG	19/31 (61.3%)		Pts off TO's	8
FT	0/3 (0.00%)	0	3Pt Eff	+8.6
Scoring Distribution: 2FG 92.3% 3FG 7.7% FT 0.0%				

Barren County

Shooting		Pts	Pts	
2FG	6/15 (40.0%)	12s	Pts/Shot	0.66
3FG	2/13 (15.4%)	6	2nd Eff Pts	4
TFG	8/28 (28.6%)		Pts off TO's	2
FT	1/2 (50.0%)	1	3Pt Eff	-11.3
Scoring Distribution: 2FG 63.2% 3FG 31.6% FT 5.3%				

KHSAA Basketball - Scoring Timeline Report
Sacred Heart Academy Valkyries vs. Barren County Trojonettes
 DATE: 03/26/2004 TIME: 8:30 pm SITE: Diddle Arena-Bowling Green, KY



Largest Lead SACR 86 Bar 38 (48 pts) Lead Changes 0 Number of Ties 1

KHSAA Basketball - Play by Play Report - Scoring Only (pg 1)

Sacred Heart Academy Valkyries vs. Barren County Trojonettes

Date: 03/26/2004 Time: 8:30 pm Site: Diddle Arena-Bowling Green, KY Attendance: 4530

Name	Action	Action	Score	Clock	Diff	Name	Action	Action
T Kopple	Layup Made	C Kelly Assist	2-0	1 7:44	+2 (L1)			
			2-2	1 7:28	(T1)	P Barlow	FG Made	
C Kelly	FG Made	T Kopple Assist	4-2	1 7:14	+2			
C Kelly	FT Made		5-2	1 7:14	+3	L Williams	Personal Foul	
J Distler	Layup Made		7-2	1 6:56	+5			
C Ormerod	Layup Made		9-2	1 6:02	+7			
			9-5	1 5:45	+4	P Lindsey	3Pt Made	
C Kelly	FG Made	J Distler Assist	11-5	1 5:38	+6			
			11-6	1 5:22	+5	P Lindsey	FT Made	
C Kelly	Putback Made		13-6	1 5:14	+7			
			13-8	1 4:55	+5	L Williams	FG Made	T Thomas Assist
J Distler	FG Made	C Kelly Assist	15-8	1 4:09	+7			
			15-10	1 3:51	+5	H Edmunds	FG Made	T Thomas Assist
C Kelly	FG Made	J Distler Assist	17-10	1 3:41	+7			
A Denbow	FG Made	C Ormerod Assist	19-10	1 3:04	+9			
J Hess	Layup Made	K McCarty Assist	21-10	1 1:39	+11			
C Ormerod	Layup Made	J Hess Assist	23-10	1 1:20	+13			
			23-12	1 1:05	+11	P Barlow	FG Made	
K McCarty	Layup Made	C Ormerod Assist	25-12	1 0:21	+13			
K McCarty	Layup Made		27-12	1 0:01	+15			

End of Period Summary Valkyries 27 Trojonettes 12

Largest Lead: Valkyries 27 Trojonettes 12 (15 pts)

Lead in Period: Valkyries 27 Trojonettes 12 (15 pts)

5 for 0 oppo pts
2 for 2 pts
13/18 for 72.2 %
1/2 for 50.0 %

Turnovers
2nd Chances
Field Goals
Free Throws

Lead Changes: 1 Ties: 1
Lead Changes: 0 Ties: 1 (this period)
7 for 6 oppo pts
3 for 2 pts
5/15 for 33.3 %
1/2 for 50.0 %

T Kopple	Layup Made	J Distler Assist	29-12	2 7:28	+17			
T Kopple	Layup Made	C Ormerod Assist	31-12	2 6:50	+19			
T Kopple	Layup Made	J Hess Assist	33-12	2 5:51	+21			
			33-14	2 5:30	+19	P Barlow	Layup Made	
T Kopple	FG Made	C Kelly Assist	35-14	2 5:11	+21			
J Hess	Layup Made	T Kopple Assist	37-14	2 4:44	+23			
E Campbell	Personal Foul		37-15	2 4:00	+22	L Williams	FT Made	
C Kelly	FG Made	T Kopple Assist	39-15	2 2:38	+24			
C Kelly	FG Made	C Ormerod Assist	41-15	2 2:00	+26			
			41-17	2 1:44	+24	J Mitchell	Putback Made	
C Ormerod	FG Made	C Kelly Assist	43-17	2 1:25	+26			
C Ormerod	FT Made		44-17	2 0:55	+27			
C Ormerod	FT Made		45-17	2 0:55	+28			
			45-19	2 0:48	+26	T Thomas	Layup Made	B Spillman Assist
J Distler	FG Made		47-19	2 0:21	+28			

End of Period Summary Valkyries 47 Trojonettes 19

Largest Lead: Valkyries 45 Trojonettes 17 (28 pts)

Lead in Period: Valkyries 45 Trojonettes 17 (28 pts)

2 for 0 oppo pts
2 for 2 pts
9/12 for 75.0 %

Turnovers
2nd Chances
Field Goals

Lead Changes: 1 Ties: 1
Lead Changes: 0 Ties: 0 (this period)
4 for 8 oppo pts
4 for 3 pts
3/13 for 23.1 %

KHSAA Basketball - Play by Play Report - Scoring Only (pg 2)

Sacred Heart Academy Valkyries vs. Barren County Trojonettes

Date: 03/26/2004 Time: 8:30 pm Site: Diddle Arena-Bowling Green, KY Attendance: 4530

Name	Action	Action	Score	Clock	Diff	Name	Action	Action
	2/2 for 100 %			Free Throws			1/2 for 50.0 %	
J Distler	Putback Made		47-21	3	7:27	+26	H Edmunds	FG Made
C Kelly	FG Made	T Kopple Assist	49-21	3	7:04	+28		P Lindsey Assist
J Hess	Putback Made		51-21	3	6:38	+30		
			53-21	3	6:10	+32		
			53-23	3	5:49	+30	P Barlow	Layup Made
T Kopple	FG Made	J Hess Assist	55-23	3	5:29	+32		
C Kelly	FG Made		57-23	3	4:57	+34		
E Campbell	FG Made	J Distler Assist	59-23	3	4:23	+36		
			59-25	3	4:01	+34	B Spillman	Putback Made
T Kopple	Layup Made	C Ormerod Assist	61-25	3	3:17	+36		
			61-27	3	3:04	+34	B Spillman	Putback Made
C Ormerod	Putback Made		63-27	3	2:36	+36		
K McCarty	Putback Made		65-27	3	1:36	+38		
			65-30	3	1:19	+35	T Thomas	3Pt Made
			65-32	3	0:50	+33	P Lindsey	Layup Made
E Campbell	FG Made		67-32	3	0:17	+35		B Spillman Assist
			67-35	3	0:01	+32	P Barlow	P Barlow Assist
								3Pt Made

End of Period Summary Valkyries 67 Trojonettes 35

Largest Lead: Valkyries 65 Trojonettes 27 (38 pts)

Lead in Period: Valkyries 65 Trojonettes 27 (38 pts)

3 for 2 oppo pts

8 for 10 pts

10/19 for 52.6 %

0/0 for 0.00 %

Turnovers

2nd Chances

Field Goals

Free Throws

Lead Changes: 1 Ties: 1

Lead Changes: 0 Ties: 0 (this period)

3 for 4 oppo pts

3 for 4 pts

7/14 for 50.0 %

0/0 for 0.00 %

E Campbell	FG Made	K McCarty Assist	69-35	4	4:39	+34		
			69-36	4	4:19	+33	J Shelton	FT Made
K McCarty	FG Made		71-36	4	3:24	+35		
K McCarty	FG Made	M Wade Assist	73-36	4	2:53	+37		
			73-38	4	2:44	+35	H Lindsey	FG Made
S Miles	FG Made	M D Muller Assist	75-38	4	2:20	+37		
M D Muller	Putback Made		77-38	4	1:43	+39		
K Barrow	3Pt Made	K McCarty Assist	80-38	4	0:56	+42		
K McCarty	Putback Made		82-38	4	0:42	+44		
K Barrow	Layup Made	K McCarty Assist	84-38	4	0:21	+46		
M Wade	Layup Made	M D Muller Assist	86-38	4	0:01	+48		

End of Period Summary Valkyries 86 Trojonettes 38

Largest Lead: Valkyries 86 Trojonettes 38 (48 pts)

Lead in Period: Valkyries 86 Trojonettes 38 (48 pts)

6 for 0 oppo pts

3 for 6 pts

9/12 for 75.0 %

0/3 for 0.00 %

Turnovers

2nd Chances

Field Goals

Free Throws

Lead Changes: 1 Ties: 1

Lead Changes: 0 Ties: 0 (this period)

3 for 4 oppo pts

3 for 0 pts

1/14 for 7.14 %

1/2 for 50.0 %

OFFICIAL BASKETBALL BOX SCORE
 Barren County Trojonettes vs Sacred Heart Academy Valkyries

03/26/2004 8:30 pm
 Final Box Score

Diddle Arena
 Bowling Green, KY

No.	Barren County Trojonettes	Total FG		3-point		Free throw		Rebounds			F	TP	A	TO	BLK	STL	MIN
		FG	FGA	FG	FGA	FT	FTA	Off	Def	Tot							
4	Piper Lindsey	2	9	1	6	1	2	0	0	0	0	6	1	5	0	1	23:58
5	TJ Thomas	2	7	1	5	0	0	2	1	3	0	5	2	1	0	1	19:27
11	Haley Wilkinson	0	4	0	4	0	0	0	0	0	1	0	0	0	0	0	8:41
20	Haley Lindsey	1	2	0	1	0	0	0	1	1	1	2	0	1	0	0	4:43
23	Patrika Barlow	5	16	1	3	0	0	2	2	4	1	11	1	3	0	1	22:27
33	Lindsey Williams	1	4	0	2	1	2	0	1	1	3	3	0	1	0	0	15:50
41	Bethany Spillman	2	3	0	0	0	0	3	2	5	1	4	2	3	0	1	15:04
25	Haley Edmunds	2	3	0	0	0	0	0	0	0	1	4	0	2	1	1	14:37
24	Jessica Mitchell	1	2	0	0	0	0	1	1	2	1	2	0	0	0	0	10:20
35	Jessica Shelton	0	2	0	0	1	2	0	0	0	0	1	0	0	0	0	9:57
45	Sarah Bauer	0	2	0	1	0	0	0	0	0	0	0	0	1	0	0	5:22
21	Julie Wilson	0	0	0	0	0	0	0	0	0	1	0	0	0	0	0	4:19
22	Jessica Jolley	0	2	0	1	0	0	1	0	1	1	0	0	0	0	0	3:10
31	Casey Glover	0	0	0	0	0	0	0	0	0	0	0	0	0	0	0	2:05
Team (Included in Totals)								4	0	4							
Totals		16	56	3	23	3	6	13	8	21	11	38	6	17	1	5	160
Total FG%: 1st half 8 - 28 (28.6%) 2nd half 8 - 28 (28.6%) Game 16 - 56 (28.6%)												Deadball					
3Pt FG%: 1st half 1 - 10 (10.0%) 2nd half 2 - 13 (15.4%) Game 3 - 23 (13.0%)												rebounds					
FT%: 1st half 2 - 4 (50.0%) 2nd half 1 - 2 (50.0%) Game 3 - 6 (50.0%)												3					

No.	Sacred Heart Academy Valkyries	Total FG		3-point		Free throw		Rebounds			F	TP	A	TO	BLK	STL	MIN
		FG	FGA	FG	FGA	FT	FTA	Off	Def	Tot							
00	Carly Ormerod	4	11	0	2	2	2	1	5	6	1	10	5	0	0	2	19:21
3	Alison Denbow	1	1	0	0	0	0	1	0	1	0	2	0	2	0	0	11:13
10	Mary Daly Muller	1	2	0	0	0	0	2	2	4	1	2	2	0	0	1	6:03
11	Jackie Distler	4	4	0	0	0	0	2	1	3	1	8	4	0	0	0	16:45
15	Taylor Kopple	7	10	0	0	0	0	1	1	2	1	14	4	1	0	0	19:56
22	Jordan Hess	3	6	0	0	0	0	2	0	2	1	6	3	3	0	4	20:34
42	Crystal Kelly	8	11	0	1	1	2	1	6	7	1	17	4	2	2	1	16:00
24	Kelsey McCarty	6	7	0	0	0	1	2	6	8	1	12	4	3	1	2	14:12
30	Elizabeth Campbell	3	3	0	0	0	0	0	1	1	1	6	0	2	1	0	12:45
43	Kristen Barrow	2	2	1	1	0	0	0	1	1	1	5	0	1	0	0	8:23
33	Meredith Wade	1	2	0	0	0	0	0	1	1	0	2	1	1	0	1	7:59
23	Sarah Miles	1	2	0	0	0	2	0	0	0	1	2	0	0	1	0	6:49
20	Connie Ferch	0	0	0	0	0	0	0	0	0	0	0	0	0	0	0	DNP
Team (Included in Totals)								3	2	5							
Totals		41	61	1	4	3	7	15	26	41	10	86	27	16	5	11	160
Total FG%: 1st half 22 - 30 (73.3%) 2nd half 19 - 31 (61.3%) Game 41 - 61 (67.2%)												Deadball					
3Pt FG%: 1st half 0 - 2 (0.00%) 2nd half 1 - 2 (50.0%) Game 1 - 4 (25.0%)												rebounds					
FT%: 1st half 3 - 4 (75.0%) 2nd half 0 - 3 (0.00%) Game 3 - 7 (42.9%)												2					

Technical Fouls: None

Attendance: 4530

Officials: Tommy Hall, Steve Kellam, Shannon Feck

Score by Period	1st	2nd	3rd	4th	Final	Record	Overall	Conf
Barren County Trojonettes	12	7	16	3	38	Trojonettes		
Sacred Heart Academy Valkyries	27	20	20	19	86	Valkyries		

Valkyries Trojonettes	Valkyries Trojonettes	Valkyries Trojonettes
Points off Turnovers 22 2	Second Effort Points 20 9	Bench Points 31 12
Points in the Paint 52 20	3 Point Points 3 9	Free Throw Points 3 3
3pt Efficiency -21.8 -13.2	Points/Shot 1.34 0.64	Defensive Stops 43 24
Largest Lead 86 38 (48 pts)	Lead Changes 0	Number of Ties 1

Game comments: None